

# AUI LOGGING

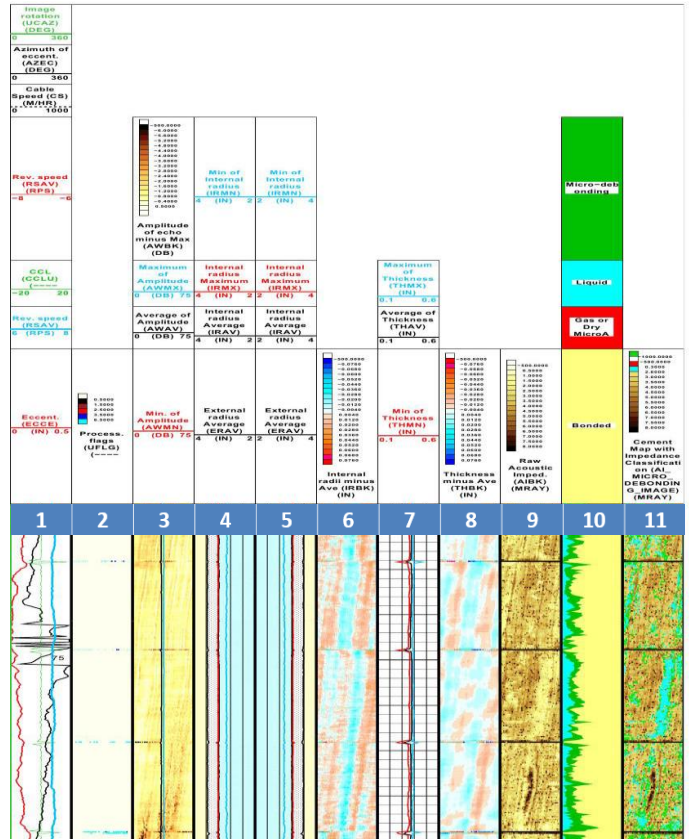
AUI, Annular Ultrasonic Imaging Logging is an advanced cased-hole logging technology utilizing detection of echo amplitude, time of echo and echo attenuation mechanism. AUI provides precise evaluation of cement bond quality with 360° imaging profile. The casing OD & ID, corrosion and eccentricity information can also be obtained simultaneously. The AUI logging is a proven technology that has been applied on various applications including casing integrity assessment, precise cement bond evaluation, etc.

## The Scope of Applications

- Precise Cement Bond Evaluation
- Casing Eccentricity, Stand-Off Assessment
- Casing Integrity Assessment
  - Corrosion Detection
  - Wall Thickness and Diameter

## AUI Tool Specifications

- Tool OD: 2.752in
- Tool Length: 21.0ft (including 2 centralizers)
- Tool Weight: 205.03lbs (including 2 centralizers)
- Working Temperature: < 347deg F
- Pressure Rating: 24,285psi
- Inspection Casing Range: 4.5in – 14.0in
- Instrumental Errors of Radius Detection: 0.002in
- Wall Thickness Range: 0.18in – 0.59in



## Output of a cased-hole log displays the follows

- Track 1: Casing eccentricity/stand-off, casing coupling position.
- Track 2 & 3: Casing echo amplitude and time.
- Track 4 & 5: Casing ID & OD.
- Track 6 & 8: Casing corrosion imaging display.
- Track 7: Casing wall thickness.
- Track 9 & 11: Acoustic impedance imaging display.
- Track 10: Cement Bond Imaging display.

Top depth: 2437.12 [m]  
 ZF: 50.280 G481  
 RMI: 3.100 in  
 ITHK: 0.352 in  
 ITHN: 0.361 in  
 RMK: 3.126 in  
 ECCE: 0.035 in  
 %ZEC: 169.556 deg

