

Phantom Hybrid® Big-Bore Bridge Plug

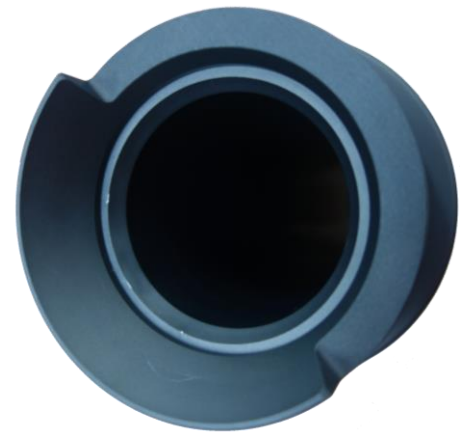


Phantom Hybrid® big bore bridge plug (BBBP) is a revolutionary design evolved from conventional big bore bridge plugs, combining large ID feature of conventional big bore bridge plug and the fast-drilling feature of composite plugs. This unique plug design brings your wells onto production in the most efficient manner. In addition, production logging or re-frac operation - likely to be faced in wells' production life has been considered. A greatly simplified removal process, given the high drillability of Phantom Hybrid® BBBP will ensure you full bore access for better logging or re-frac solutions.



Features:

- Maximum 2.25" ID big bore allows maximum production through tool & CT intervention through the tool
- Aluminum & composite components for shorter drill out time
- Full bore access after drill out
- Pressure rating to 10,000 psi (STD)
- Temperature rating to 302°F (STD)
- Used with VVANISH™ metal/PGA dissolvable frac ball
- Compatible with standard wireline or hydraulic setting tools
- Robust anti-preset design minimizes premature setting risk



Specifications:

Model	Casing		Tool	
	Size(in)	Weight(lb/ft)	OD (in)	ID (in)
4.5 Phantom Hybrid®	4½"	13.5	3.562	1.968
5.5 Phantom Hybrid®	5½"	26.0 - 26.8	4.063	2.250
Pressure Rating	10,000 psi (STD)			
Temperature Rating	302°F(STD)			
Setting Tool	Baker 10#/20#			
NOTE: Other designs are upon request.				